



TURNSTILE

ASSEMBLY INSTRUCTIONS

 **GERAN**[®]
physical access control products

 +31 (0) 548 543 000
 info@geran-access.com
 www.geran-access.com



Mounting full height turnstiles

Welcome to this installation guide for a full height turnstile. Correct mounting of the full height turnstile is an important step in improving access control and ensuring security for business premises or outdoor locations. We are happy to help with this assembly.

In fact, this process can be quite simple when the right steps are followed in the right order. With these 10 steps, we will guide you step by step through the assembly process. If all goes well, after going through this document, you will have a complete turnstile at your location. Using photos, we will show you step by step how to assemble a turnstile. The photos were taken during the assembly of a turnstile by our own technical specialist. With these photos, we hope to describe a simple step-by-step plan that can be understood by all installers, security professionals or end users.

Let's start together on the next from where we will take you through the 10 steps of installation. In no time, the turnstile will be ready for your access control!

For further questions or technical support, we can be reached through the following channels:

Whatsapp: +316 22361472

Telefoon: +31 548 543 000

E-mail: support@geran-access.com

1. Assembly of the comb

Installation starts with mounting the comb. Place the comb upright on the a flat and solid surface; for example, a concrete floor, tile floor or mobile plate at least 125 mm deep.

Then drill holes in the substrate at the appropriate places and make sure the drill holes are clean. F

ix the comb to the substrate using 4 screws with chemical anchor of at least M10 size.If necessary, see the anchor plan for sizing the drill holes.

Make sure that the following parts are present on the comb:

1. Carousel ring
2. Plastic ball
3. Seater rings



2. Assembly of the screen

Mount the screen on the substrate. Take care of the following note:

The distance between the outside of the comb and the outside of the screen is 1400 mm.



First measure a distance of 1400 mm from the outer side of the comb and mark this point. Then position the outer side of the screen at the marked 1400 mm point. Use the spirit level to ensure that the screen is positioned straight across from the comb. See image below. N

ext, **only fix the centre drill hole** of the screen to the substrate with at least an M10 anchor rod with chemical anchor. The other drill holes will be fixed in step 7.



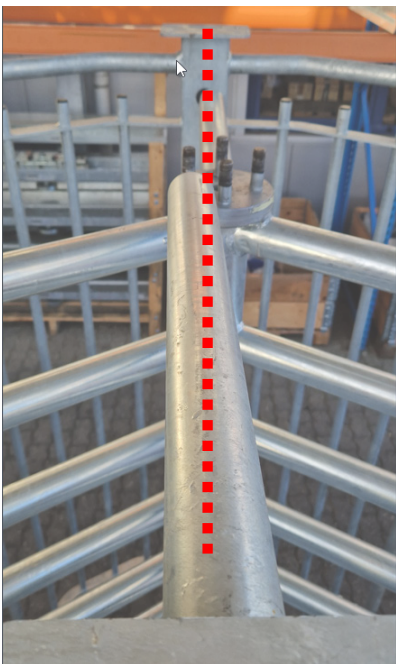
3. Rotor installation

The rotor comes with matching nuts. Loosen these nuts from the cross, to be able to mount it to the upper casing later.



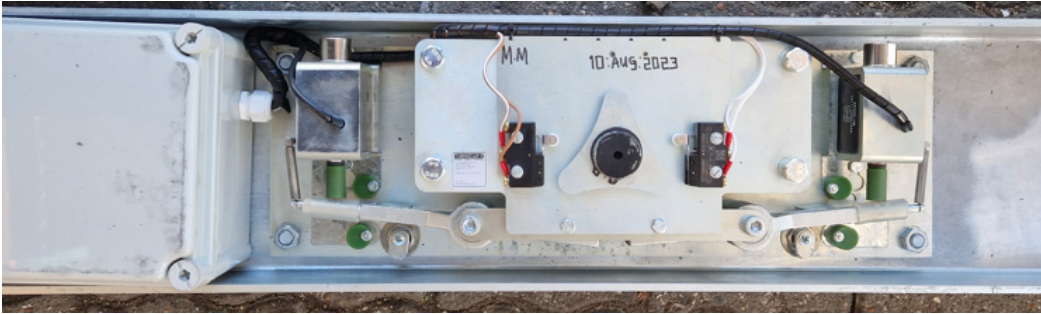
Then put the rotor upright, on top of the plastic ball of the comb. Two people are needed for this operation. Pay close attention that the rotor is immediately in the right starting position, which is in a straight line with the comb.

The mounting bolts for the top channel should also be in a straight line. Look carefully at the photos below to determine the correct starting position.



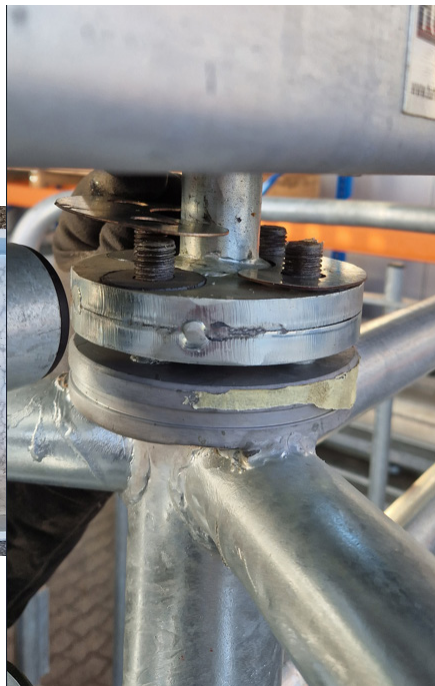
4. Mounting the top channel

Before fitting, check that the parts match the picture.

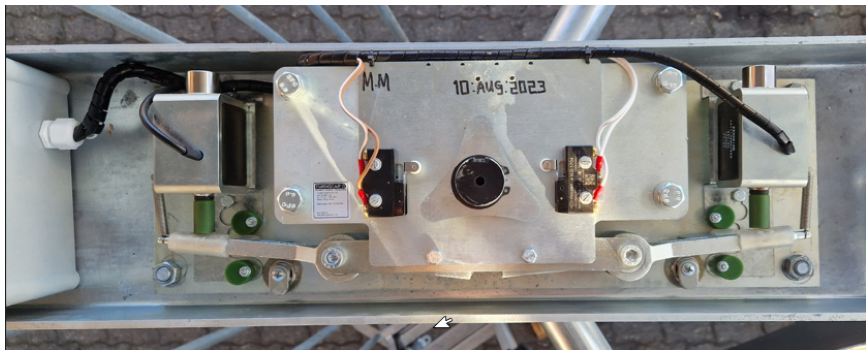
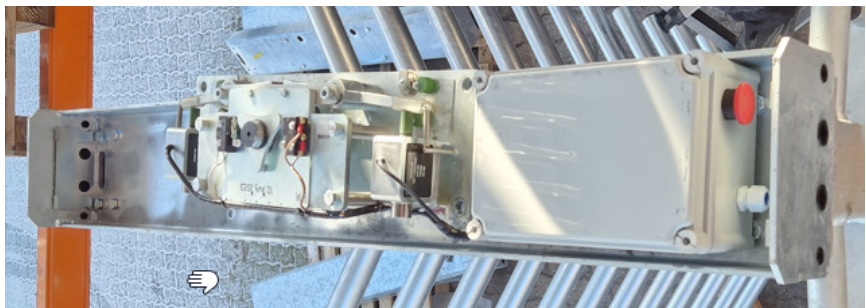


There are two options for installing the top channel:

1. Installation included IP Box and mechanism; this requires a forklift. This is the most simple step, because the top channel can be placed completely on top of the rotor. Make sure that the disc on the bottom of the top channel mechanism is positioned correctly. The mounting holes should match the bolts on the top of the rotor so that they fit together.



2. Installation only of the top channel case, followed by installation of the IP box and mechanism in the case. This requires unscrewing the mechanism and IP box from the top box. The top box can then be lifted on top of the rotor and side stands. After this, install the mechanism and IP box back into the top box. Again, make sure that the mechanism's disc fits exactly on the rotor, as described in the photos under option 1.



5. Fixing the rotor

Make sure the bean washers are inserted first. Then hand-tighten the hexnuts.



6. Finishing the upper channel

Fit the top channel to the side stands by tightening the bolts. These are red circled in the image below. The top channel should be in a straight line with the side stands.



Mount the locking plate correctly in the top channel as shown in the image below.



7. Finishing off

Having previously only hand-tightened the nuts, it is now important to tighten them using a spanner.



Then continue mounting the screen to the substrate by securing the remaining drill holes with a chemical anchor. Make sure these are in a straight line.



8. Initial position of the turnstile

If all goes well, the turnstile now looks like the images below. Check again if the rotor is in the right starting position, as shown in the image below.



9. Plaatsen rubber buffers

Fold the two halves that make up the rubber buffer (sleeve) together. First tighten the middle screws, as shown in the right picture. Then tighten the lower screws to secure the buff to the rotor.



10. Placing top cover on the top channel

Place the cover on the top channel and lock it with the corresponding key.



Congratulations, you finished the turnstile!

By the time you reach this page, the turnstile has most likely been successfully assembled.

We hope this guide has been of service in successfully assembling the turnstile. If all goes well, the turnstile now looks like the image to the right.

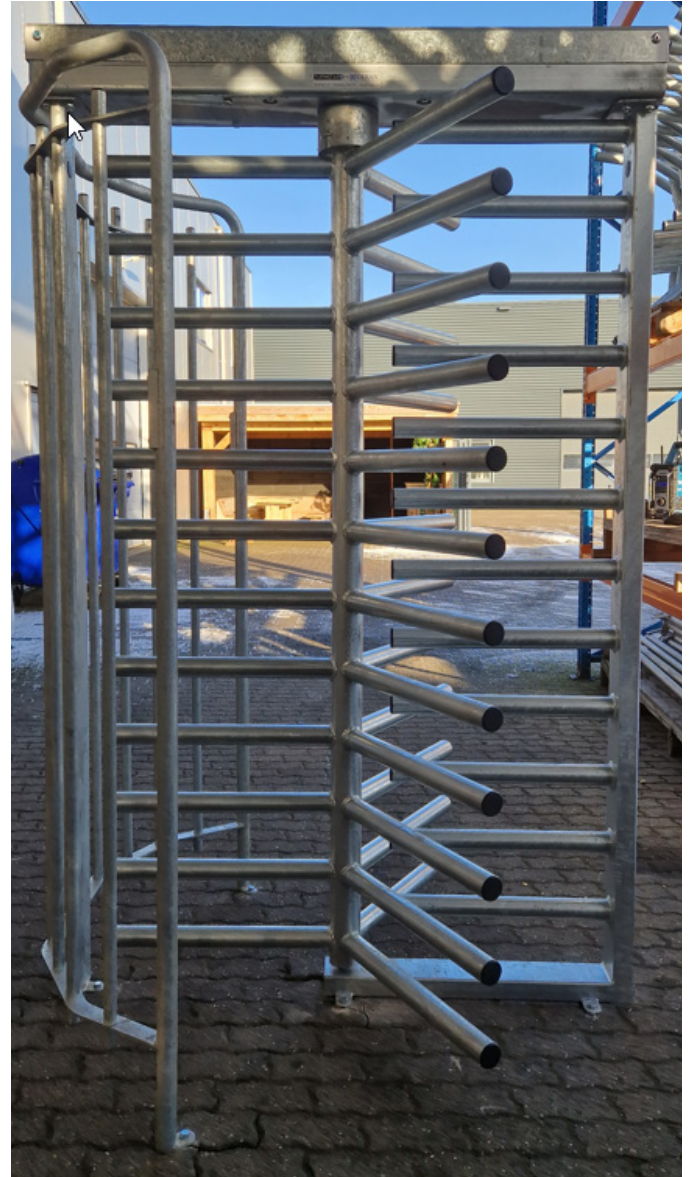
On behalf of Geran Access Products BV we wish you a lot of pleasure and operational satisfaction with your new turnstile! We would like to thank you for your trust in us by choosing our product. We always strive for the highest quality and customer satisfaction and hope the turnstile will fulfil your expectations.

If you have any questions about our products or need further support in the future, please do not hesitate to contact us. We are always ready to be of service!

Best regards,

The team

Geran Access Products BV



Netherlands
Butaanstraat 23
7463 PG Rijssen
+31 548 - 543 000
info@geran-access.com