

Date 29/04/2019 10:35  
Last saved on 22/09/2022 17:08:00  
Filename S&G Basic Manual

WRITTEN BY

VERIFIED BY

APPROVED BY

| Full Name  | Full Name        | Full Name        |
|------------|------------------|------------------|
| Mario Elia | date + signature | date + signature |

### Purpose of the document

User Manual including settings procedures for all devices from the S&G Basic range. Firmware version 16.0.

## Contents

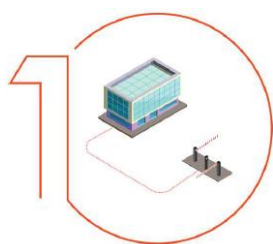
|        |  |    |
|--------|--|----|
| 1      | Introduction .....   | 3  |
| 2      | Scan&Go BASIC components .....   | 4  |
| 2.1    | Scanner Units .....  | 4  |
| 2.2    | Ticket generation .....  | 5  |
| 2.2.1  | SGB-DT1.x (desktop printer) .....  | 5  |
| 2.2.2  | Printer controller (printer column) .....  | 6  |
| 3      | Configuring the scanner unit .....   | 7  |
| 3.1    | Configuring the scanner unit using command cards (offline update procedures) .....       | 7  |
| 3.1.1  | How to link an additional desktop printer to a scanner controller .....                  | 8  |
| 3.1.2  | Configuring the display languages .....  | 9  |
| 3.1.3  | Configuring the flow direction of a controlled access.....                               | 10 |
| 3.1.4  | Exit .....   | 10 |
| 3.1.5  | Entrance.....  | 10 |
| 3.1.6  | How to configure an access in "Free access" mode? .....                                  | 11 |
| 3.1.7  | How to configure an access in "Permanent closed" mode? .....                             | 11 |
| 3.1.8  | How to reset the scanner controller (Factory defaults).....                              | 12 |
| 3.1.9  | How to set the timezone .....  | 12 |
| 3.1.10 | How to add a permanent access card .....   | 13 |
| 3.1.11 | How to remove a permanent access card.....   | 13 |
| 3.1.12 | How to synchronize the internal clocks of a desktop printer and a scanner controller.... | 14 |
| 3.1.13 | How to print barcode tickets using the DAS desktop printer .....                         | 14 |
| 3.1.14 | How to delete the event memory of the control unit .....                                 | 15 |
| 3.1.15 | How to reboot the scanner controller.....  | 15 |
| 3.1.16 | How to trigger the output relay of the scanner controller .....                          | 15 |
| 3.1.17 | How to upgrade the license for virtual links.....  | 16 |
| 3.2    | Configuring the scanner unit using BASIC AdminTool .....                                 | 17 |
| 3.2.1  | Selecting the right com port.....  | 17 |
| 3.2.2  | Troubleshooting the USB Serial Port .....  | 18 |
| 3.2.3  | Configuring the Scanner Unit .....   | 20 |
| 4      | Setting up a desktop printer .....   | 22 |
| 4.1    | Printing access tickets with the desktop printer .....                                   | 22 |
| 4.2    | Printing a timestamp ticket with the desktop printer (Admin mode).....                   | 23 |
| 4.3    | Printing statistics (Admin mode).....  | 23 |
| 4.4    | Printing a Printer Identity ticket with the desktop printer (Admin mode).....            | 23 |
| 4.5    | Configuring a desktop printer using BASIC AdminTool .....                                | 24 |
| 4.5.1  | Device menu .....  | 24 |
| 4.5.2  | Tools menu.....  | 25 |
| 5      | Configuring the printer controller .....   | 26 |
| 5.1    | Device menu.....   | 26 |
| 5.1.1  | System settings.....   | 26 |
| 5.1.2  | Kiosk printer settings .....   | 26 |
| 5.1.3  | Send logo to device .....  | 26 |
| 5.2    | Tools menu .....   | 28 |
| 5.2.1  | Info .....   | 28 |
| 5.2.2  | Trigger an action.....   | 28 |
| 5.2.3  | Copy/restore configuration.....  | 28 |
| 5.2.4  | Restore factory defaults .....   | 28 |
| 5.2.5  | Send firmware.....   | 28 |
| 5.3    | Logs.....  | 29 |

# 1 Introduction

This manual describes how to commission a Scan&Go Basic kit (which includes one scanner unit and one desktop printer), and a Scan&Go BASIC printer controller (which usually comes integrated in an aluminum column). Please read the relevant technical datasheets and ensure the technical installation is done as described in these documents before continuing.

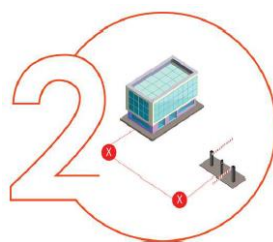
Before reading this manual further, it is also important to note that our products operate according the principle of Virtual Communication (= Virtual Networks). This means that you can determine where, when, how long and how often your barcode tickets are valid without having to network Scan&Go BASIC products (scanners and printers) with each other via a WiFi or wired data network. Electrical power is enough.

## HOW IS THIS POSSIBLE?



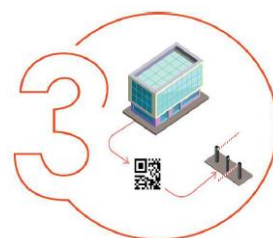
### TRADITIONAL PRODUCTS

Traditional access control often needs a wired or wireless network. This implicates costly disadvantages as such solutions require cabling works, software and / or wireless communication devices. In addition, traditional reading technologies such as tokens and RFID cards are not the ideal choice when it comes to managing customers, visitors, suppliers, etc. Moreover, tokens can't be limited in time validity which leaves you no control as to when your temporary users will effectively leave your site.



### AVOID COMPLEXITY

With Scan&Go by default you do not need any data network, only electrical power. With this you avoid all the disadvantages of a wired or wireless solution mentioned above. In addition, Scan&Go uses 2D codes on thermal tickets or cards that do not need to be recovered and therefore avoids the inconvenience of insertion solutions with which you have to empty the tank regularly.



### CHOOSE SCAN & GO EFFICIENCY

The ticket validity is encoded in the 2D code. As a result it is the 2D code that determines the duration and frequency of use of a ticket, without any communication between scanners, printers and your physical access. Electrical power is enough.

These default configurations can be modified by applying two different procedures:

- Offline/standalone update procedures by scanning specific command cards (see XXXXX). This update procedure only applies to the scanner.
- Using the configuration software BASICAdminTool. This update procedure can be applied to all three Scan&Go BASIC hardware devices.

## 2 Scan&Go BASIC components

### 2.1 Scanner Units

The standalone scanner control unit, with integrated CCD scanner and LCD display, interprets Scan&Go Basic 2D code tickets without any communication with Scan&Go Basic printers or a data network. It has one output to which you can connect a physical access.



## 2.2 Ticket generation

### 2.2.1 SGB-DT1.x (desktop printer)

This desktop barcode printer for thermal paper comes with 3 push buttons. One of them is inactive. The other two buttons generate **unique barcode** tickets. Each button by default generates a different access right:

- Grey button: Single Use tickets valid for 30 minutes after printing (typically for visitors).
- Blue button: Multiple Use tickets valid till the end of the day (typically for subcontractors, suppliers, etc... ).

Plug in the power cable and start printing. By default the BCP-DT1.x does not require any software configuration and is thus immediately operational.



The free-of-charge configuration software 'BASICAdminTool' allows customization of the above mentioned access rights and ticket layout.



## 2.2.2 Printer controller (printer column)



This aluminium column comes with an integrated kiosk printer for thermal tickets connected to a S&G BASIC controller including one output (for connection to a physical access) and one input (presence detection input).

### 3 Configuring the scanner unit

The scanner unit comes preconfigured but you can customize/modify this default configuration either using the free-of-charge configuration software BASIC AdminTool or a list of barcode command cards and thus apply software-less/offline update procedures.

#### 3.1 Configuring the scanner unit using command cards (offline update procedures)

As described above, the default configuration that the scanner unit comes with, can be updated or modified by scanning specific command cards to the scanner. Please find hereunder a description of each command card:


- S&G BASIC Identity NNNN: Each Scan&Go BASIC product has a unique identity, represented by a 1D code (= barcode) or 2D code. This identity is printed on a PVC card and comes included in the packaging of the product in question. It is to be scanned prior to each command card listed below.
- S&G Printer NNNN: This card is a unique barcode representing the scanner's identity.
- Link printer: Is used to virtually link a printer and a scanner controller to each other.
- Unlink printer: Is used to virtually unlink a printer and a scanner controller.
- Permanent closed: Is used to permanently close an access until a new command is given.
- Free access: Is used to permanently open an access until a new command is given.
- Direction : Exit: Is used to program the scanner controller in "Exit mode" thus allowing coherent messages to appear on the LCD screen.
- Direction : Entrance: Is used to program the scanner controller in "Entrance mode" thus allowing coherent messages to appear on the LCD screen.
- Set language: Is used to configure the languages in which the messages will appear on the LCD screen.
- Set timezone: Is used to program the timezone.
- Timezone WET, EET, GMT, en CET: Scan one of these cards after you scanned "Set timezone".
- Restore factory defaults: Is used to do a reset of the scanner controller.
- Add permanent card: Is used to add a barcode card with permanent access rights
- Remove permanent card: Is used to remove a permanent card from the control unit memory
- Open barrier: Is used to trigger one relay of the control unit
- Reboot: Is used to reboot the control unit
- Set time: Is used to synchronize the time of a printer with a scanner control unit.
- Clear ticket memory: Is used to delete the event memory of a scanner controller.
- Status display:
- Set Virtual Links: Optional command card allowing to increase the number of virtual link licenses.

Simply scanning these command cards to the scanner will allow easy & fast configuration. While doing so, read the messages on the display so you always know where you are in the configuration process. When powering on the controller, the LCD display shows the serial number of the controller during a few seconds:



BCU+2-0023-H42-F48H

Then you'll see the following messages alternating:



Please scan your  
ticket

And: date and time

### 3.1.1 How to link an additional desktop printer to a scanner controller



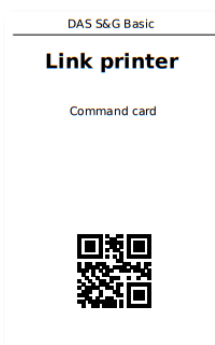
Each S&G Basic scanner control unit and printer comes with a “S&G Basic Scanner Identity” and a “S&G Basic Printer Identity” card. These unique barcode cards are necessary for a software-less commissioning.



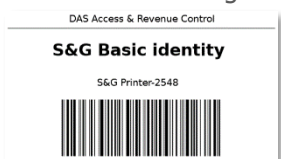
Please note that a S&G Basic scanner controller can read barcodes from up to two desktop printers. In other words, you can create a virtual link between one scanner and a maximum of two printers. If you want to activate more than two virtual links on a scanner, please apply the procedure described in 3.1.17.

The scanner won't interpret any 2D code tickets unless it has an activated virtual link with the printer(s) that generated the 2D code.

- Scan the card « S&G Basic Identity» until you see the the message 'Please scan: Command card'.
- Scan the command card "Link printer" until the message 'Please scan: Printer identity' appears.



- Then scan the card "S&G Printer Identity" of the printer you want to link virtually to the scanner controller. The message 'Printer linked' appears.



- Repeat this procedure for each printer that has to be linked.

To undo a virtual link, repeat the above-mentioned procedure and replace the card "Link printer" by the card "Unlink printer".



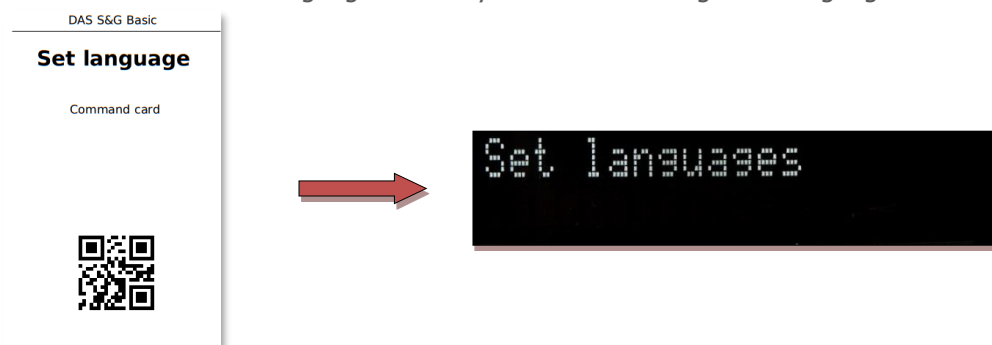
The message "Ticket printed by another printer" appears when scanning a ticket from a printed which has not been virtually linked.



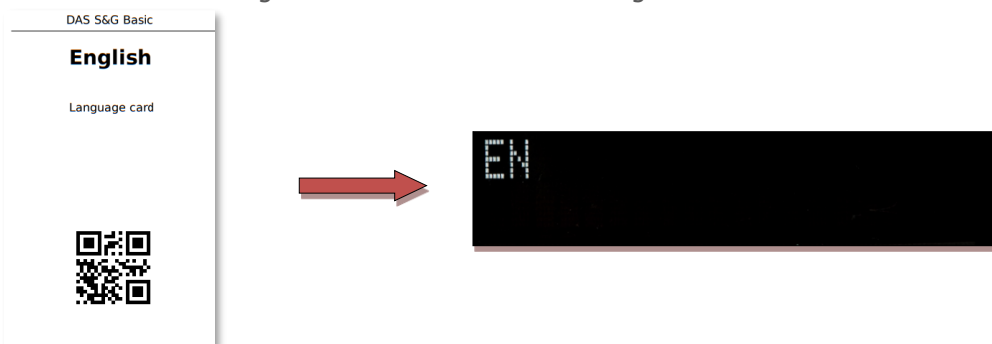
### 3.1.2 Configuring the display languages

In this example, we want the messages to appear in English, French and German.

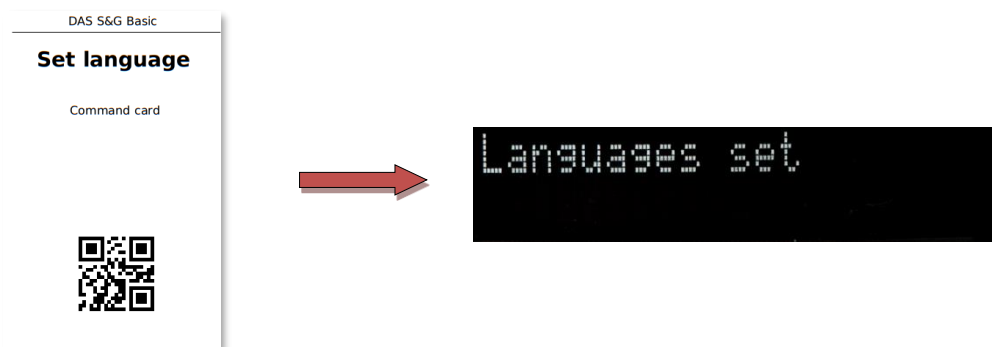
1. Scan the card "S&G Basic Identity" to the scanner controller until you see the message 'Please scan: Command card'.
2. Scan the command card « Set languages » until you see the message 'Set languages'.



3. Scan the command card « English ». You now see the message 'EN'.



4. Now scan the card « French ». You now see the message 'FR'.
5. Now scan the card « German ». You now see the message 'DE'.
6. Confirm your choices by scanning the command card «Set languages » again until you see the message.



7. If you want the messages only to appear in the first language (EN), scan the card "Set language" after step 3.



The messages will appear on the display in the same order as the language cards were scanned.

### 3.1.3 Configuring the flow direction of a controlled access

The scanner controller must be programmed in Entrance or Exit mode in order to allow coherent messages to appear on the display. The default mode is "Exit".

#### 3.1.4 Exit

- Scan the card « S&G Basic Scanner Identity » to the scanner until you see the message 'Please scan: Command card'.
- Then scan the command card « Direction : Exit » until you see the message 'Access configured as exit'.



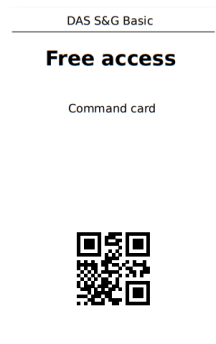
#### 3.1.5 Entrance

- Scan the card « S&G Basic Scanner Identity » to the scanner until you see the message 'Please scan: Command card'.
- Then scan the command card « Direction : Entrance » until you see the message 'Access configured as entrance'.



### 3.1.6 How to configure an access in "Free access" mode?

- Scan the card « S&G Basic Scanner Identity » to the scanner until you see the message 'Please scan: Command card'.
- Then scan the card "Free access" until you see the message 'Free access configured'.



Free access  
configured

- The display shows from now on the message 'Free access'.

Free access



Free Access mode activates a permanent control of the relay. Please check the compatibility of your physical access with this command. For example, an automatic barrier could be configured to close automatically even with our permanent open command.

- To return to a controlled mode: Scan the card « S&G Basic Scanner Identity » until you see the message 'Please scan: Command card'.
- Then scan the card « Free access » until you see the message 'Access control activated'.

### 3.1.7 How to configure an access in "Permanent closed" mode?

- Scan the card « S&G Basic Scanner Identity » to the scanner until you see the message 'Please scan: Command card'.
- Then scan the card "Permanent closed" until you see the message 'Access closed'.

Access closed

- From now on the screen will display the message "Sorry, this access is closed" until this setup is changed again.

Sorry, this access  
is closed

- To return to a controlled mode: Scan the card « S&G Basic Scanner Identity » until you see the message 'Please scan: Command card'.
- Then scan the card « Permanent closed » until you see the message 'Access control activated'.

### 3.1.8 How to reset the scanner controller (Factory defaults)

- Scan the card « S&G Basic Scanner Identity » until you see the message 'Please scan: Command card'.
- Then scan command the card "Restore factory defaults" until you see the message 'Resetting....'.

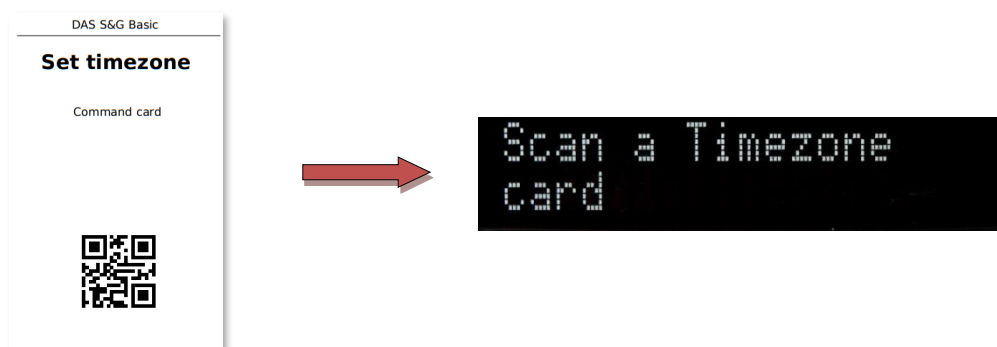


- You'll now see the message 'Reset OK' during a few seconds.



### 3.1.9 How to set the timezone

- Scan the card « S&G Basic Scanner Identity » until you see the message 'Please scan: Command card'.
- Then scan the command card « Set Timezone » until you see the message 'Scan a Timezone card'.



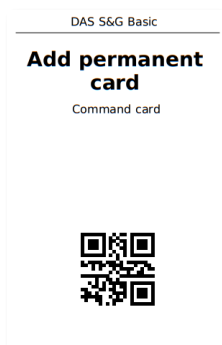
- Scan one of the cards "GMT" (Greenwich Mean Time), "WET" (Western European Time), "CET" (Central European Time) or "EET" (Eastern European Time).
- You'll now see the message 'Timezone set' during a few seconds.



Select "CET" for an automatic daylight saving time management.

### 3.1.10 How to add a permanent access card

- Scan the card « S&G Basic Scanner Identity » until you see the message 'Please scan: Command card'.
- Then scan the command card "Add permanent card" until you see the 'Please scan: Permanent card'.



Please scan:  
Permanent card

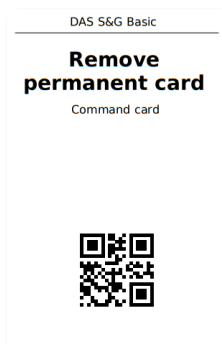
- Scan the "Permanent card" to be added until you see the message 'Permanent card added'.
- Repeat the previous step for each "Permanent card" you want to add and then finish this procedure by scanning the command card "Add permanent card". You'll now see the message 'Returning.....' during a few seconds.

Permanent card  
added

Returning.....

### 3.1.11 How to remove a permanent access card

- Scan the card « S&G Basic Scanner Identity » until you see the message 'Please scan: Command card'.
- Then scan the command card "Remove permanent card" until you see the message 'Please scan: Command card'.



Please scan:  
Permanent card

- Scan the "Permanent card" to be removed until you see the message 'Permanent card removed'.

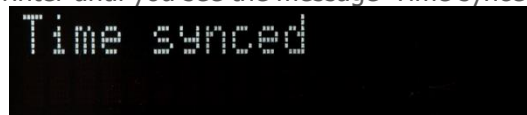
Permanent card  
removed

### 3.1.12 How to synchronize the internal clocks of a desktop printer and a scanner controller

- Put the printer in Admin Mode by pressing either the grey or blue push buttons while powering on the printer.
- Then, remove your finger from the push button. The printer is now in Admin mode. No access control barcodes can be printed anymore.
- Now press the grey and blue buttons simultaneously until the printer starts printing a "Timestamp" ticket (If you first want to update the system time of the printer use the configuration software DAS BASIC AdminTool).
- Scan the card « S&G Basic Scanner Identity » until you see the message 'Please scan: Command card'.
- Then scan the command card "Set time". You'll now see the message 'Please scan: Timestamp'.



- Scan the time ticket generated by the desktop printer until you see the message 'Time synced'.



When applying the above mentioned procedure, a small delay between both internal clocks is unavoidable. Use AdminTool if a precise synchronization is required.

### 3.1.13 How to print barcode tickets using the DAS desktop printer

The desktop printer comes with three push buttons. The orange-coloured one is not active. The other two allow printing barcodes. Each button generates barcodes with a default validity.

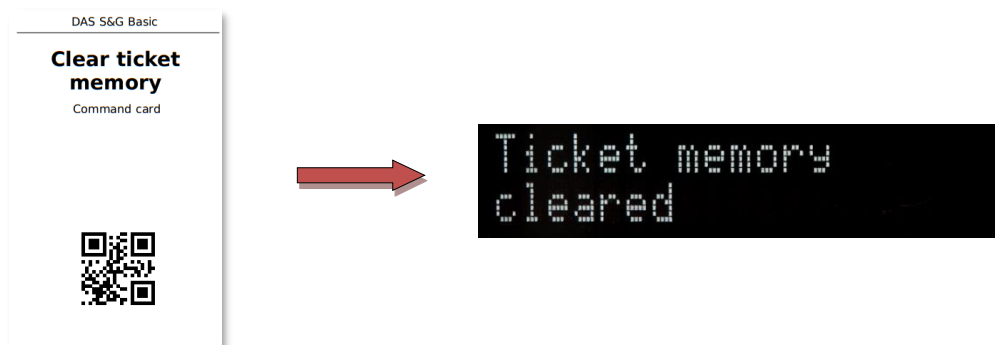
- Grey button (Multiple entry):
  - This ticket can be used multiple times until the end of the day
- Blue button (Single entry):
  - This ticket can only be used once within 30 minutes after it was printed.



Use DAS BASICAdminTool to customize the validity of the two push buttons and the ticket layout (= adding a logo and specific text, ...).

### 3.1.14 How to delete the event memory of the control unit

- Scan the card « S&G Basic Scanner Identity » until you see the message 'Please scan: Command card'.
- Then scan the command card "Clear ticket memory" until you see the message "Ticket memory cleared".



When the scanner controller unit is deleting the events memory, the LCD display will not display anything.



If you configured the desktop printer to print barcodes with access rights that are longer than the default access rights the printer comes with, the scanner might need more time to search through its events memory. In these cases, emptying the event memory from time to time might be useful.

### 3.1.15 How to reboot the scanner controller

- Scan the card « S&G Basic Scanner Identity » until you see the message 'Please scan: Command card'.
- Then scan the command card "Reboot"



During the reboot process, the LCD display will not display anything.

### 3.1.16 How to trigger the output relay of the scanner controller

- Scan the card « S&G Basic Scanner Identity » until you see the message 'Please scan: Command card'.
- Then scan the command card "Open barrier".

### 3.1.17 How to upgrade the license for virtual links

By default, a scanner comes with a virtual link license for a maximum of two printers. Each additional virtual link is optional and requires to update the virtual link license of the scanner controller. For practical reasons, this update procedure can only be done using a specific optional command card.



When ordering this command card, make sure to mention the serial number of the scanner controller and the total number of virtual links that you want this controller to be updated with.

- Scan the card « S&G Basic Scanner Identity » until you see the message 'Please scan: Command card'.
- Then scan the command card "Set Virtual Links".



- Then scan the optional command card "FwoBNNNNVLN" until you hear the scanner beep and see the message "Virtual links updated".





## 3.2 Configuring the scanner unit using BASIC AdminTool



DAS BASIC AdminTool is a self-contained PC web application that does not need a working internet connection. However, due to the web technologies used, your firewall or virus scanner could interfere with it. Don't restrict or reduce the security level of DAS BASIC AdminTool, even when requested by your computer and make sure that network port 7100 is available.

### 3.2.1 Selecting the right com port

The setting in DAS AdminTool must match the port you connect the DAS device to.

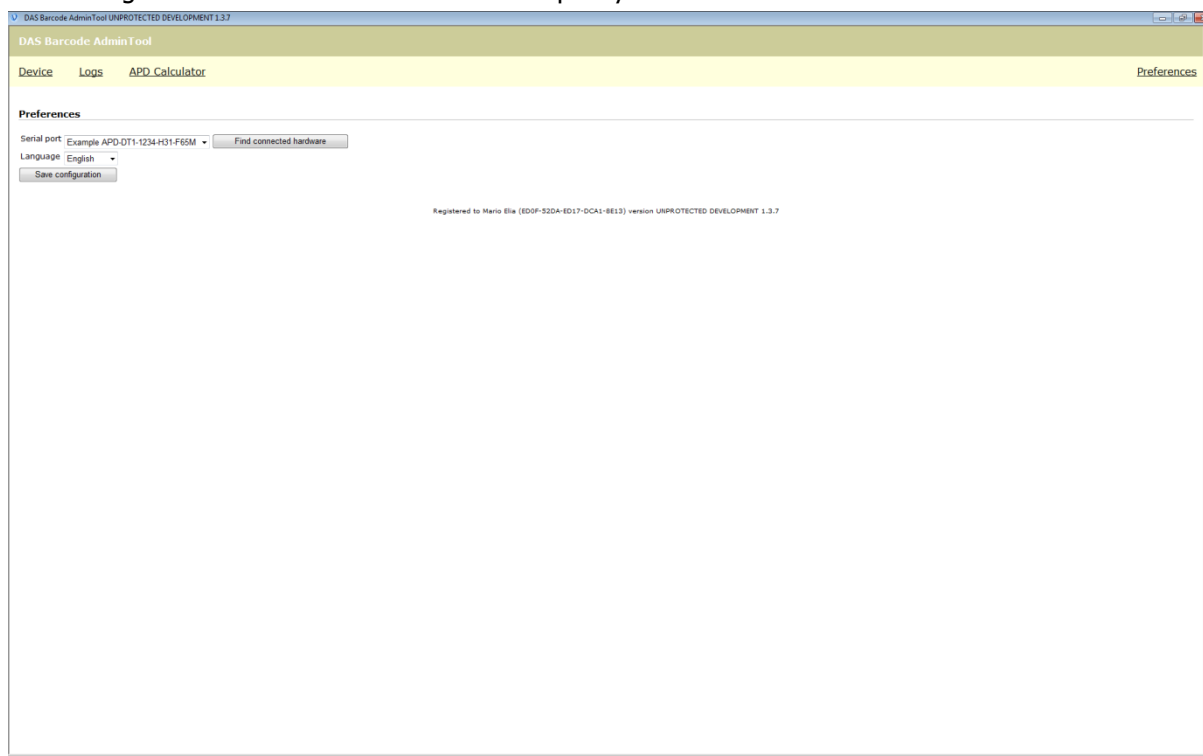


Fig 03

- Click on 'Preferences' at the top right of your screen
- If you know the port number, select the correct port from the drop down box.
- If you don't know the port number, click 'Find connected hardware' until you see the message 'Device has been detected on Com #'. It can take a while for DAS AdminTool to scan all serial ports of your computer.
- Select this com-port in the drop-down menu next to 'Serial port'.
- Click on 'Save'
- You now see the message 'Configuration saved'

### 3.2.2 Troubleshooting the USB Serial Port

If you are using a USB Serial port converter, and DAS AdminTool can't communicate with the device try the following steps:

- Go to start>run and type "devmgmt.msc" (you can type this in the 'Search' box in the start menu of Windows Vista/7/10)



Fig 04

- Double click 'USB Serial Port COM #' and click the 'Port configuration



Fig 05

- Click 'Advanced' and change the Port number assigned to the COM port to a number below 10. If all ports below 10 are reported in-use, pick one and ignore the warning.

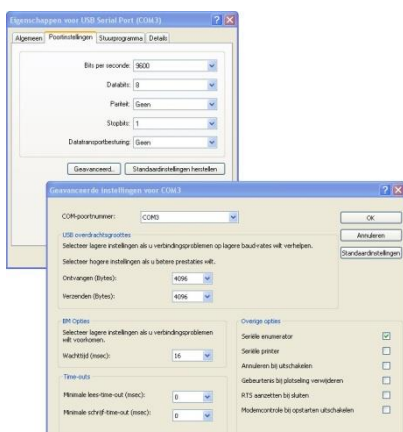


Fig 06

- Close the configuration Windows by clicking the 'OK' buttons.

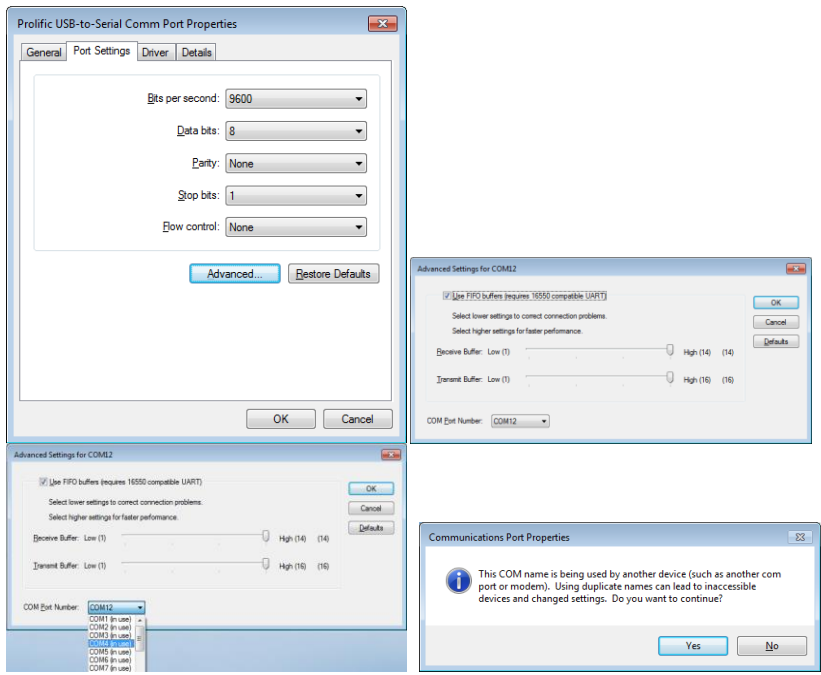


Fig 07

### 3.2.3 Configuring the Scanner Unit



Make sure to always click on 'Save settings to device' after making modifications!!

#### 3.2.3.1 Device menu

Click on 'Devices' at the top left of your screen. You will then see the following:

##### Settings for S&G

S&G-2402-H50-F0146

##### System settings

Date:

Timezone:

Display language:

Ticket date notation:

Ticket title:

##### Access control

Access control mode:

Linked printers: Only the barcode at the beginning of each line is interpreted:

Permanent cards: Only the barcode at the beginning of each line is interpreted:

Direction:

Presence detection: setting not available

Ticket memory size:  Use the entire scan history to match the scanned ticket to (this can take several seconds).  
 Use  minutes of scan history to match the scanned ticket to.

Extend Ticket Extend the validity of scanned ticket with  minutes.

Fig 08

#### 3.2.3.2 System settings

Change if necessary the date, time zone, display language and ticket date notation:

- Date: when connected to your computer, the Scanner Unit automatically duplicates the computer date
- Timezone: select "CET" if you want the Daylight Saving Time management to occur automatically.
- Display language: you can select up to three languages – display messages will be displayed in these languages.

### 3.2.3.3 Access Control

- **Access control mode:** make your choice out of 3 access control modes:
  - Enabled (=Default)
  - Free Access
  - Permanent closed



Free Access mode activates a permanent trigger of the output relay. Please check the compatibility of your physical access with this command. For example, an automatic barrier could be configured to close automatically after a while, even with our permanent open command.

- **Linked printers:**

- Overview of printer identities which are linked to the scanner control unit



Please note that one scanner can by default have at maximum virtual links with two DAS printers. Each additional virtual link is optional and requires a new "Virtual Link License" (see 5.2).

- **Permanent cards:**

- Overview of permanent cards (= 24/7 cards) that will be accepted by the scanner unit

- **Direction:** choose the access control direction in order to allow coherent messages to appear on the screen.

- Entrance (Welcome message)
- Exit (Goodbye message) (=Default)

- **Ticket memory size:**

- Match with entire scan history....
- Match with 24h00 scan history....(=Default)



The feature "Ticket memory size" affects the response time of the scanner unit. Matching a scanned ticket with the entire (full) scan history may take up to 7 seconds once the log memory is full!!!

When using limited use tickets (for instance Single Use) with a validity of more than 24h, the timeframe configured under "Ticket memory size" must be modified (default = 24h)!

- **Extend ticket:** This feature allows to automatically extend the validity time of the barcode ticket with a predefined number of minutes. This can be useful to overcome possible divergences between internal clocks of virtually connected printers and the scanner unit.

## 4 Setting up a desktop printer

Plug in the power cable and start printing. The BCP-DT1.6a does not require any configuration and is thus immediately operational.

### Paper requirements:

- POS direct thermal paper 79.5mm +/- 0.5mm
- Max roll diameter: 83mm
- Paper thickness 56~60g/m<sup>2</sup>
- Make sure to load the paper the correct way, otherwise tickets will be printed blank



### 4.1 Printing access tickets with the desktop printer

The desktop printer comes with three push buttons. The orange button is inactive. The grey and blue push buttons allow printing barcodes with a different validity.

- Grey button: Single Use tickets valid for 30 minutes after printing (typically for visitors).
- Blue button: Multiple Use tickets valid till the end of the day (typically for subcontractors, suppliers, etc... ).



The default validity of the two push buttons can be modified using the free-of-charge configuration software BASIC AdminTool.

## 4.2 Printing a timestamp ticket with the desktop printer (Admin mode)



This is important information if you wish to synchronize the internal clocks of the scanner unit and desktop printer.

- Power off the printer



- Put the printer in Admin Mode by pressing either the grey or blue push buttons while powering the printer on (keep the button pressed while powering on).



- Remove your finger from the push button after a few seconds. The printer is now in Admin mode. No access control barcodes can be printed anymore.
- Now press the grey and blue buttons simultaneously until the printer starts to print a "Timestamp" ticket.
- To return from admin mode to a normal operational mode, power off the printer during a few seconds, then power it on again.

## 4.3 Printing statistics (Admin mode)

The desktop printer allows you to print statistics showing the number of tickets you generated with the grey and blue push button since the last statistics generation.

- Power the printer off
- Put the printer in Admin Mode by pressing either the grey or blue push buttons while powering the printer on (keep the button pressed while powering on).
- Remove your finger from the push button after a few seconds. The printer is now in Admin mode. No access control barcodes can be printed anymore.
- Now press the grey button until a statistics ticket is printed.
- To return to a normal operational status, power off the printer during a few seconds, then power on.

## 4.4 Printing a Printer Identity ticket with the desktop printer (Admin mode)

- Power the printer off
- Put the desktop printer in Admin Mode by pressing either the grey or blue push buttons while powering the printer on (keep the button pressed while powering on).
- Remove your finger from the push button after a few seconds. The printer is now in Admin mode. No access control barcodes can be printed anymore.
- Press the blue button until the printer starts to print a ticket "Printer Identity".

## 4.5 Configuring a desktop printer using BASIC AdminTool



**Info regarding desktop printers with product code BCP-DT1.6a.** In order to be able to communicate with your pc, the switch at the back of this desktop printer must be on position "C".

Make sure to always click on 'Save settings to device' after making modifications!!

### 4.5.1 Device menu

Click on 'Devices' at the top left of your screen. This is what you get to see:

#### Settings for BCP

**Operating in DEMO mode. To operate on real devices click Preferences and choose a real serial port.**

BCP-DT1-1234-H31-F71Z

#### Preload ticket language

Language:

#### System settings

Date: setting not available

Timezone:

Ticket date notation:

Ticket title:

setting not available

#### Big button

Ticket subtitle:

Print several tickets: Print  tickets with this configuration.

Usage credit count:  Unlimited  
 Allow  uses.

Ticket validity: Ticket is valid for  minutes after

Ticket is valid  minutes before it expires.

#### Small button

Ticket subtitle:

Print several tickets: Print  tickets with this configuration.

Usage credit count:  Unlimited  
 Allow  uses.

Ticket validity: Ticket is valid for  minutes after

Ticket is valid  minutes before it expires.

#### Message on ticket

#### Send logo to device

•

(max. 240x240px - jpeg/gif/png)

•

Fig 10



#### 4.5.1.1 Preload Ticket Language

Select the language you want to print tickets with

#### 4.5.1.2 System settings

Change the date, time zone, ticket date notation and ticket title.

- Date: when connected to your computer, the Desktop Printer automatically duplicates the computer date
- Timezone: select "CET" if you want the Daylight Saving Time management to occur automatically
- Ticket title: type here the title you want to print on every ticket.



The maximum size for titles and subtitles is 24 characters per title.

#### 4.5.1.3 Grey and blue button

- Ticket subtitle: type the the subtitle you want to print on every ticket
- Print several tickets: define here the number of tickets you print each time you push this button
- Usage credit counts: define here the number of times tickets can be used within their time validity
- Ticket validity: define here the start and end validity
- Message on ticket: type here a message you want to print on every ticket. This message will be printed in smaller characters than the title and subtitle.

#### 4.5.1.4 Send logo to device

Click on Browse and upload a file you want to use as a logo on your tickets. The logo file should meet the following requirements:

- **Black/white (no colours)**
- **Resolution of 200dpi or more**
- **Formats: .bmp or .png**

### 4.5.2 Tools menu

Click on Tools at the top of the page.

#### 4.5.2.1 Info

General information regarding hardware and firmware.

#### 4.5.2.2 Trigger an action

- **Reboot**: Click on this button to reboot the device. It will not lose its configuration during the process.
- **Print blue button**
- **Print grey button**

#### 4.5.2.3 Copy/restore configuration

Backup a DAS device configuration and save it to your computer.  
Update a DAS device with a backup configuration file.

#### 4.5.2.4 Restore factory defaults

Return to the factory defaults.



Always make a backup file before returning to the factory defaults!!

#### 4.5.2.5 Send firmware

Update a DAS device with a new firmware file.

## 5 Configuring the printer controller

### 5.1 Device menu

Click on 'Devices' at the top left of your screen.

#### 5.1.1 System settings

Change if necessary the date, time zone, display language and ticket date notation:

- Date: when connected to your computer, the Printer Controller automatically duplicates the computer date
- Timezone: select "CET" if you want the Daylight Saving Time management to occur automatically.
- Display language: you can select up to three languages – display messages will be displayed in these languages.
- Ticket title: type here the title you want to print on every ticket.



The maximum size for titles and subtitles is 24 characters per title.

#### 5.1.2 Kiosk printer settings

- Ground loop:
- Ticket subtitle: type the the subtitle you want to print on every ticket
- Print several tickets: define here the number of tickets you print each time you push this button
- Usage credit counts: define here the number of times tickets can be used within their time validity
- Ticket validity: define here the start and end validity
- Message on ticket: type here a message you want to print on every ticket. This message will be printed in smaller characters than the title and subtitle.

#### 5.1.3 Send logo to device

Click on Browse and upload a file you want to use as a logo on your tickets.

Barcode AdminTool 1.3.48

Barcode Admin Tool

[Appareil](#) [Outils](#) [Journaux](#) [Préférences](#)

### Configurations pour S&G Basic Kiosk Printer

S&G-KP1-0000-H50-F0161

**Configuration système**

Date :

Fuseau horaire :

Langue d'affichage:

Notation date du ticket:

Titre ticket:

**Configurations imprimante kiosque**

Détection de présence:

Sous-titre ticket:

Compteur crédit usage

Illimité

Permettez  utilisations.

Validité ticket: Ticket est valable pendant  minutes après

Le ticket est valide à partir de  minutes avant la fin de validité

**Message sur ticket**

### Envoyer logo vers appareil

- 
- (max. 240x240px - jpeg/gif/png)
- 

Enregistré sur () version 1.3.48

terminé

## 5.2 Tools menu

Click on Tools at the top of the page.

### 5.2.1 Info

### 5.2.2 Trigger an action

- **Reboot:** Click on this button to reboot the device. It will not lose its configuration during the process.

### 5.2.3 Copy/restore configuration

Backup a DAS device configuration and save it to your computer.

Update a DAS device with a backup configuration file.

### 5.2.4 Restore factory defaults

Return to the factory defaults.



Always make a backup file before returning to the factory defaults!!

### 5.2.5 Send firmware

Update a DAS device with a new firmware file.

The screenshot shows the Barcode AdminTool 1.3.48 interface. The top navigation bar includes 'Appareil', 'Outils', 'Journaux', and 'Préférences'. The 'Outils' menu is active, displaying the following sections:

- Outils pour S&G-KP1**: S&G-KP1-0000-H50-F0161
- Info**:
  - hardware: S&G-KP1-0000-H50-F0161
  - langue support: EN, NL, FR, DE, PL, SV, IT, RU, ES, PT, NO
  - status: [SYSINFO]
  - time: 2000/01/14 22:47 +0100
  - Version: 161
  - Errors: "System time lost", "Printer unresponsive"
  - Battery voltage: 3.14V
  - Temperature: --- C
  - logo: no
  - swref: 250095f6533ae2f72459
  - itc: 64
  - tempid: 64
  - ...
- Déclencher action**:
  - Relancement du dispositif
- Copier/restaurer configuration**:
  - Télécharger configuration
  - Restaurer la sauvegarde: [input] Parcourir...
- Restaurer valeurs prédéfinies en usine**:
  - Attention : assurer-vous de disposer d'une copie ou de notes sur toutes les configurations.
  - Je suis conscient du fait que cette action effacera toute personnalisation effectuée avec l'AdminTool.
  - Confirmez : Réinitialisation des valeurs prédéfinies en usine
- Envoyer firmware**:
  - Parcourir...

## 5.3 Logs

Barcode AdminTool 1.3.48

Barcode AdminTool

[Appareil](#) [Outils](#) [Journaux](#) [Préférences](#)

### Logs

Mémoire événement:

| Heure                           | Type d'événement | Info | # |
|---------------------------------|------------------|------|---|
| Aucun donnée historique chargée |                  |      |   |

Enregistré sur () version 1.3.48